

MPEP Handouts
of
Livelihood Enhancement through Agricultural
Development (LEAD) project
BRAC Maendeleo Tanzania

Presentation by:
Rod Dubitsky
Hem Chandro Roy
Dr. Md. A. Saleque
September 17, 2014

Introducing BRAC

- Founded in 1972 as small relief operation; now the world's largest NGO, with 120,000 employees (including 43,000 teachers)
- Based in Bangladesh (formerly Bangladesh Rural Advancement Committee), active in 11 countries, reaching 135 million people
- Holistic approach to poverty: microfinance, healthcare, education, legal services, agriculture, poultry and livestock and much more.

Project Core Principles

Coordination

With development partners, private sector and government of Tanzania

Facilitation

Will embrace a facilitative intervention approach rather than direct provision.

Partnership

Will work through and partner with local partners to build capacity for pro-poor development

Systemic change

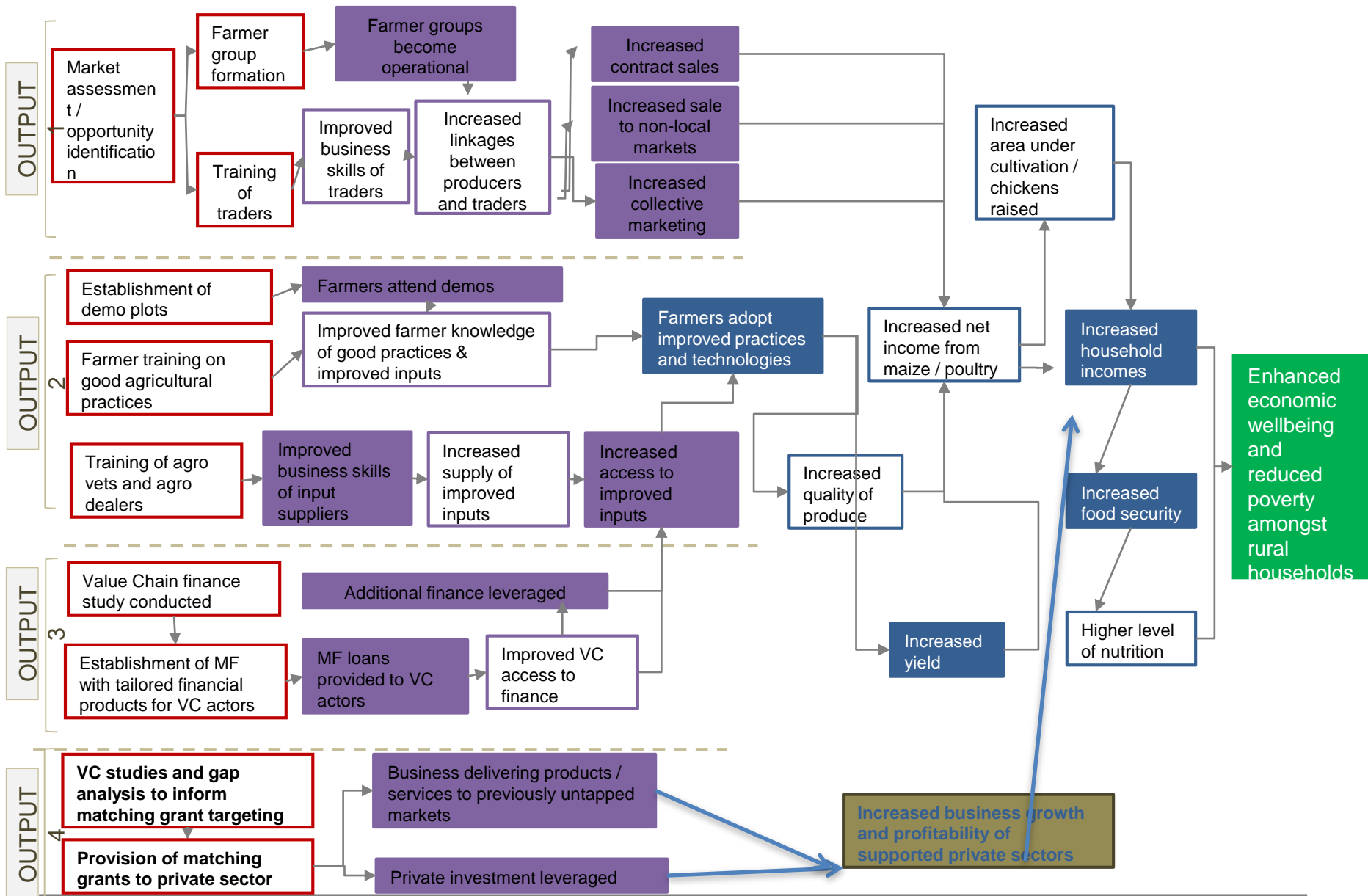
With a aim to achieve lasting and large-scale impact

ACTIVITY

OUTPUT

OUTCOME

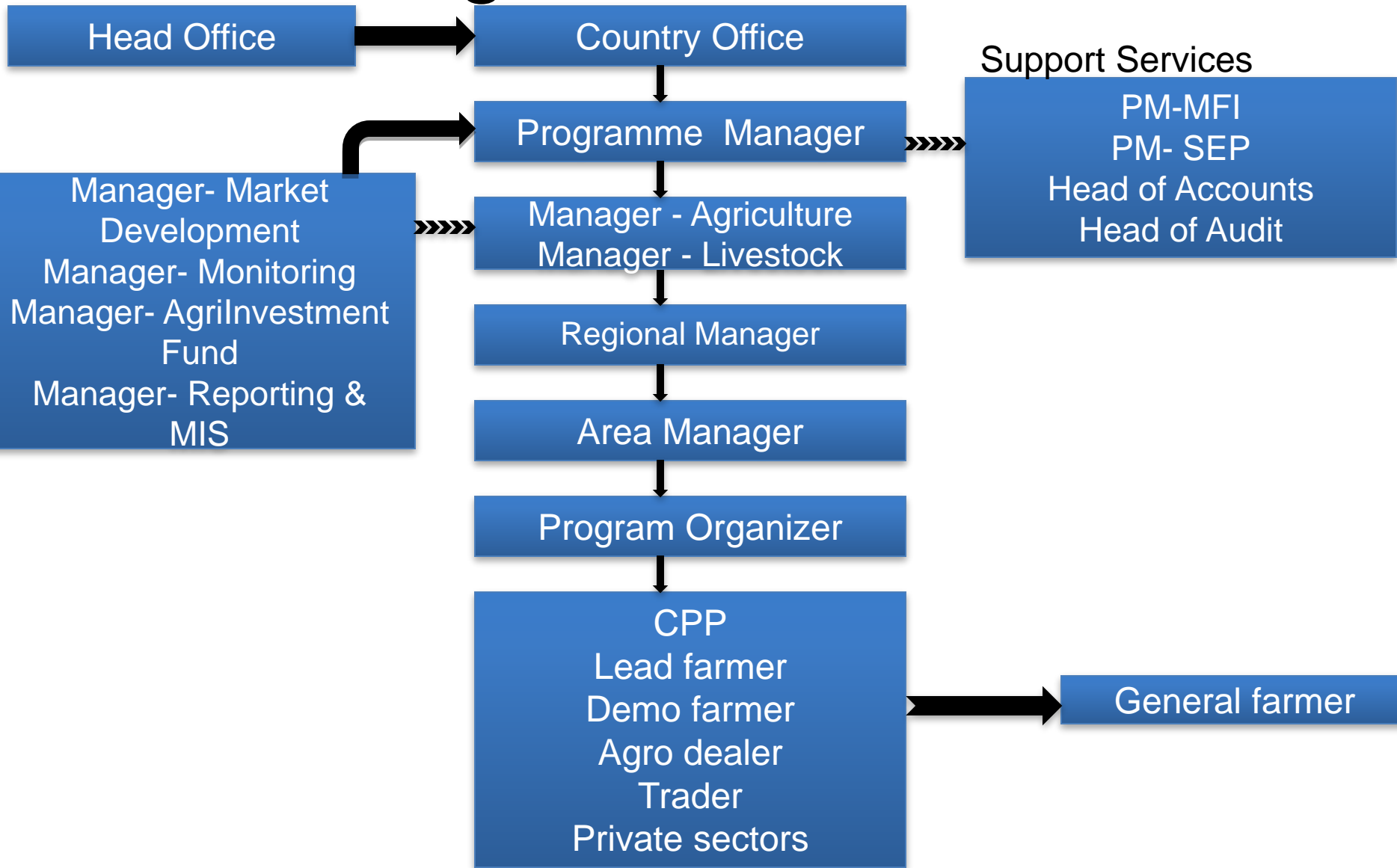
IMPACT



Monitoring and Evaluation of LEAD

- Involves both BRAC M&E and Research Staff.
- Tracks 27 outcome-related indicators including:
 - Farmers with increased real incomes from baseline
 - HH reporting access to sufficient food for previous 4 weeks
 - Proportion of farmers selling via collective marketing arrangements.
 - Farmers adopting specific management techniques and technologies
 - Number of and value of total loans disbursed/repaid
 - Businesses delivering products or services to previously un-served or underserved markets
- Randomized Control Trial will also be conducted.

LEAD Organizational Model



Farmer Training – Maize Economics

Economic calculation-Maize production for 1 acre land (£/acre)

S/L	Items	Income (£)	Total Cost (£)
A. Expenses			
1	Land lease @ 20€/acre		20
2	Land preparation (Ploughing & Harrowing) @ 17.5 £		17.5
3	Seed Cost (OPVs 8-10 kg @ 1€/kg)		10
4	Fertilizer 2 times		80
5	Pest Control		0
6	Irrigation Cost-2 times @ 15 £:		30
7	Harvesting Cost (@30€/acre)		30
8	Labour (Seed sowing, Fertilizing, weeding, Cleaning &labelling etc.) -2 labour @ 2£		4
9	Other materials		15
Total of A: Production cost (1+2+3+4+5+6+7+8+9)			207
B. Income			
Total of B: Income (Production 1500 Kg (1.5 ton @ Tsh 650/kg) in £)		381	
Profit per 1 acre (A-B) in £ (Pound)			174
Profit per 1 acre in Dollar			278.4
Profit per 1 acre in Tsh			4,45,440

Note: 1 Pound= 1.6 Dollar, 1 Dollar=1600 Tsh